

Gardner Engineering Limited

Notes:

All Tolerances +/- 0.5% unless otherwise Stated
 All Measurements are Raw Materials Only and allowances are needed for Welding Tracks & any additional coatings such as Powder Coating / Spray Paints Etc

Part Number:

Description:

Flush Unit Dual Pedestal

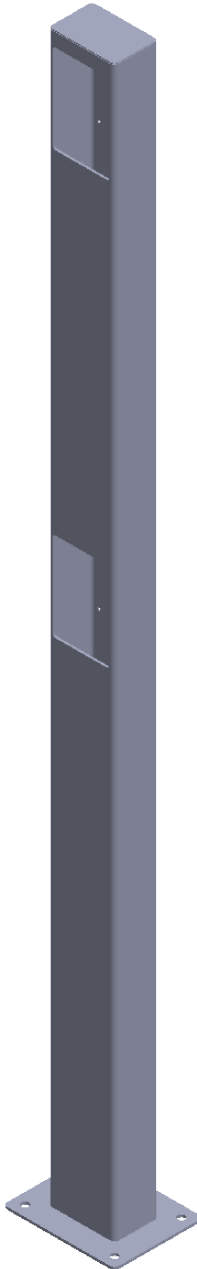
Date:

24 October 2024

Sheet Scale: 1:12

Sheet 1 Of 2

Gardner Engineering Limited (GE) makes no representation or warranties, express or implied, with respect to the reuse of the data provided herewith, regardless of its format or the means of its transmission. We make every effort to ensure accurate information, however there is no guarantee or representation to the user as to the accuracy, currency, suitability or reliability of this data. The user assumes all risks associated with its use. GE assumes no responsibility for actual or consequential damage incurred as a result of any user's reliance on this data



Gardner
Engineering
Limited

Notes:

All Tolerances +/- 0.5% unless otherwise
Stated

All Measurements are Raw Materials Only and
allowances are needed for Welding Tracks &
any additional coatings such as Powder
Coating / Spray Paints Etc

Part Number:

Description:

Date:

Flush Unit Dual Pedestal

24 October 2024

Sheet Scale: 1:12

Sheet 2 Of 2

Gardner Engineering Limited (GE) makes no representation or warranties, express or implied, with respect to the reuse of the data provided herewith, regardless of its format or the means of its transmission. We make every effort to ensure accurate information, however there is no guarantee or representation to the user as to the accuracy, currency, suitability or reliability of this data. The user assumes all risks associated with its use. GE assumes no responsibility for actual or consequential damage incurred as a result of any user's reliance on this data